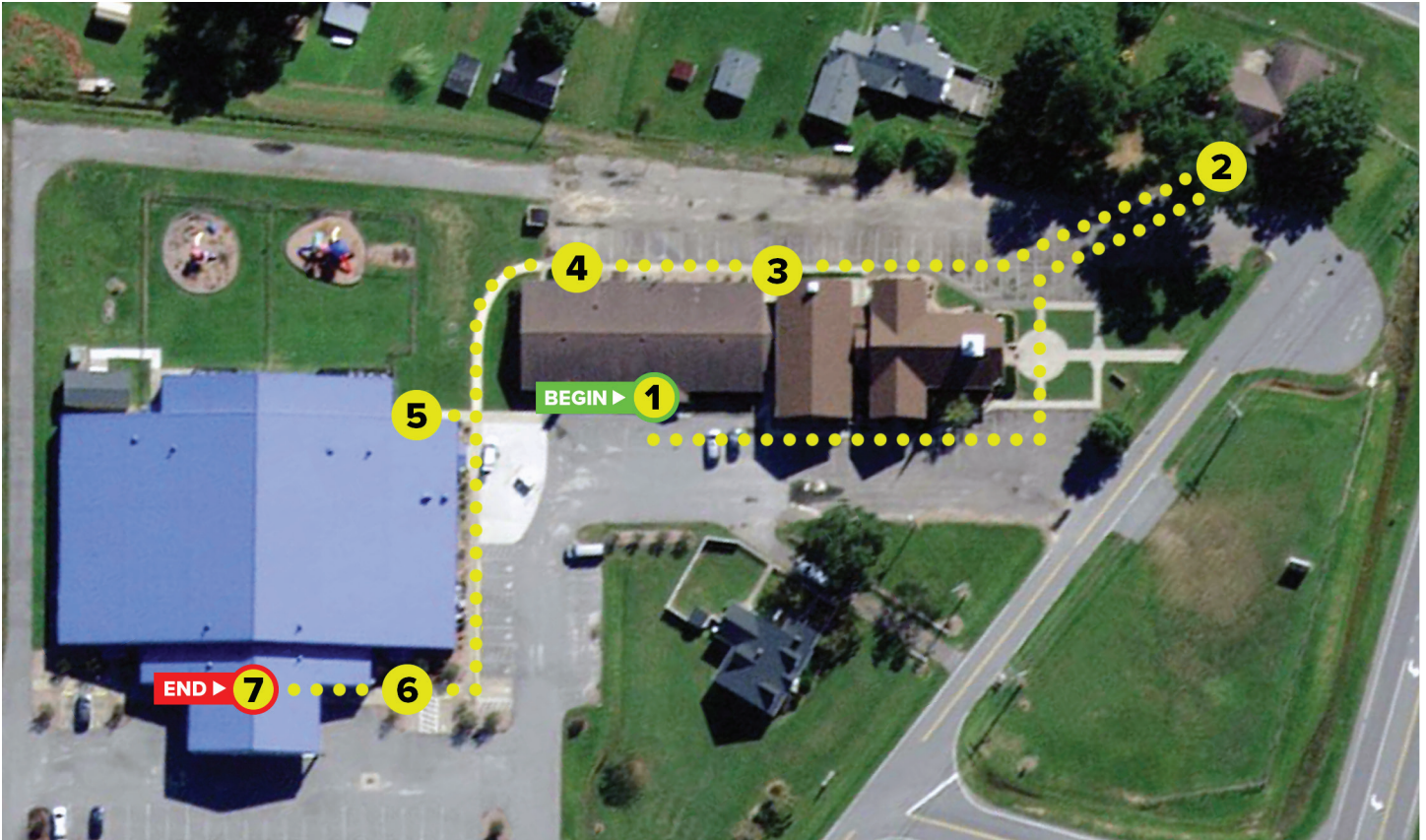


Stations of the Cross Locations



Stations of the Cross Instructions

► **Follow the circuit** to meditate on Jesus' last words:

Station #1 – Church office

Station #2 – The H.U.T.

Station #3 – Rear breezeway

Station #4 – Fellowship Hall

Station #5 – FYF rear entrance

Station #6 – FYF Infused hallway

Station #7 – Front pavilion

► **Take as long as you would like** in prayerful reverence.

► **You're encouraged to sing.** Each station has a QR code, allowing you to play the selected song, that looks like this:

- For many phones (including iPhones), simply open the camera app, put the QR code in view, and click the link that appears.
- For others, download a QR reader app.



► **Entire circuit is wheelchair accessible.**